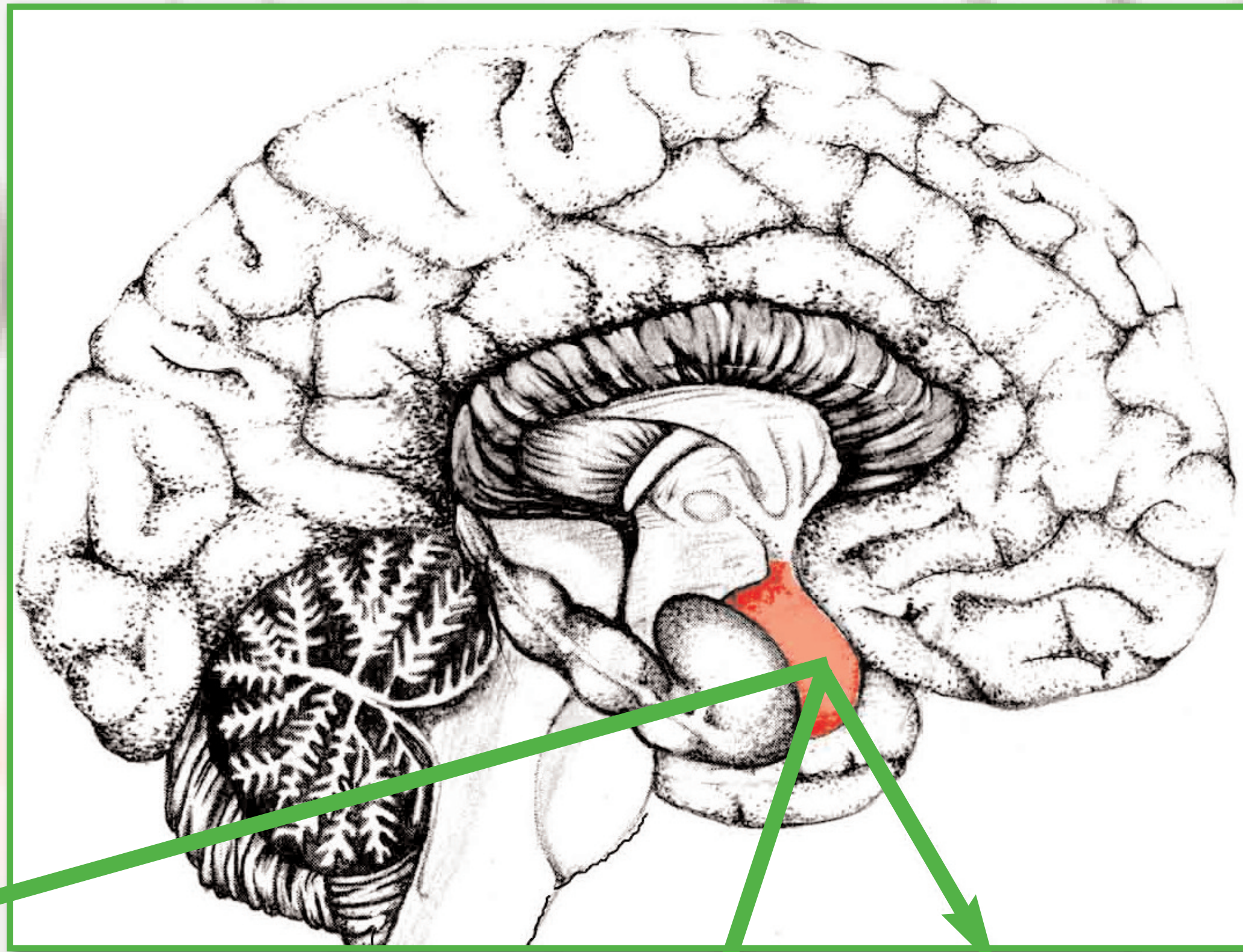


THE HYPOTHALAMUS CONTROL TOWER



HYPOTHALAMUS

HEALTH MAINTENANCE ORGANIZATION

- Equilibrium
- Eating/Drinking
- General Arousal, Rage, Aggression, Embarrassment, Pleasure, Escape from Danger
- Pulse Acceleration
- Breathing Rates
- High Blood Pressure

HYPOTHALAMUS

RELEASING HORMONES & INHIBITORY HORMONES:

- ADH
- OXYTOCIN
- GROWTH HORMONE (HGH)
- MSH

THYROID RELEASING

PITUITARY GLAND
(THE SECONDARY CONTROL TOWER)

